

MISA Professional Network Centres

- undertake activities, as professional learning communities, that include promoting a healthy data culture in aid of evidence-informed decision-making, establishing links with the research community, and building research and evaluation capacity to inform classroom practice

NETWORKING AND PARTNERSHIPS

Ontario Education Research Panel (OERP)

- champions research networks and collaborative partnerships and shares examples of research-to-practice and practice-led research collaboration

Ontario Education Research Symposium

- gives researchers, educators, and policy makers annual opportunities to build networks and partnerships, gain insights into existing education research, identify gaps for future research, and share approaches for connecting research to practice

COMMUNICATING

Research in Education (www.ontario.ca/educationresearch)

- allows access to ministry research, conference papers, provincial symposia reports including streaming video, and external research links

Research in Brief

- shares ministry research and evaluation in short, easily-understood formats

CONTRIBUTING

Research Conferences

- showcase ministry research and evaluation regularly, in Canada and abroad

National and international dialogues

- include regional research symposia, provincial research events, national liaison and international exchanges

Find out more about the Ontario Ministry of Education's Research and Evaluation Strategy at www.ontario.ca/educationresearch or e-mail your ideas to the Chief Research Officer at cro.office@ontario.ca

ONTARIO MINISTRY OF EDUCATION

RESEARCH & EVALUATION STRATEGY

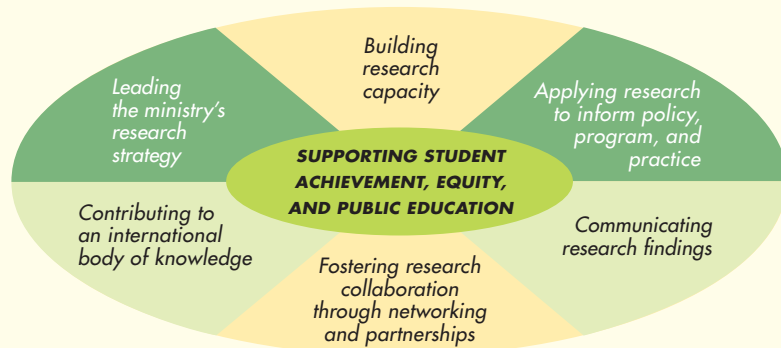
The Ontario Ministry of Education is committed to developing and implementing policies, programs, and practices that are evidence-based, research-informed, and connected to provincial education goals.



The Ministry of Education is focusing its research activities on supporting its priority education goals:

- 1 IMPROVED STUDENT ACHIEVEMENT
- 2 REDUCED GAPS IN ACHIEVEMENT
- 3 INCREASED PUBLIC CONFIDENCE IN PUBLIC EDUCATION

The ministry's Research and Evaluation Strategy is a shared strategy designed to be inclusive of staff from across all parts of the ministry and to foster collaboration with partners across the education and research communities. The Research and Evaluation Strategy's purpose is to engage all partners in connecting research/evaluation to policy, program, and practice.



COMPONENTS OF THE RESEARCH AND EVALUATION STRATEGY

The Research and Evaluation Strategy includes the following components:

- ✓ **leading** the ministry's research agenda to coordinate and manage ministry research and evaluation activities to support provincial education goals;
- ✓ **applying** research and evaluation to support evidence-based policy and program decisions and practices;
- ✓ **building** individual and organizational **capacity** to access, use, and conduct research and evaluation;
- ✓ **fostering** research collaboration through **networking and partnerships** between and among ministry staff, and researchers and educators across Ontario, to address priority research and evaluation needs;
- ✓ **communicating** information about existing and new research and evaluation activities and findings; and
- ✓ **contributing** to the provincial, national, and international body of research knowledge about educational policies, programs, and practices.

LEADING

Chief Research Officer (CRO)/Education Research and Evaluation Strategy Branch

- provides a strategic focus for research and evaluation activities aligned with the ministry's core priorities
- leads coordination and application of research, evaluation and data for aligned, evidence-based decision-making

Assistant Deputy Ministers' Committee

- provides research and evaluation leadership across the ministry

Directors' Research, Evaluation, Statistics and Analysis (RESA) Committee

- reviews divisional/branch needs and ministry priorities for aligned research, evaluation and data
- approves research and program evaluation projects conducted by, or on behalf of, the ministry

APPLYING

Integrated Evidence Plan

- charts annual and multi-year strategic research, evaluation and data analysis plans for the ministry

Vendor of Record for Education Research and Evaluation Services

- supports ministry's acquisition of research and evaluation services from external sources

Knowledge Network for Applied Education Research (KNAER)

- facilitates the development and dissemination of advanced knowledge through the application of applied education research to effective practices in schools and school boards

BUILDING CAPACITY

Evaluation and Research (E+R) Learning Program

- builds capacity among ministry staff to use research and do evaluations appropriately and effectively for evidence-based decision making with respect to policies and programs

Policy Research Connections Series/ Research Strategy Speaker Series

- encourages information-sharing and learning through sessions that develop communication networks across the ministry about research connected to ministry goals
- features presentations of latest research by visiting local, national and international education researchers